



### Features

- Heavy-duty auxiliary heater
- Heavy-duty steel construction
- (2) 2-speed motor
- (2) Universal mounting brackets

### Suggested Applications

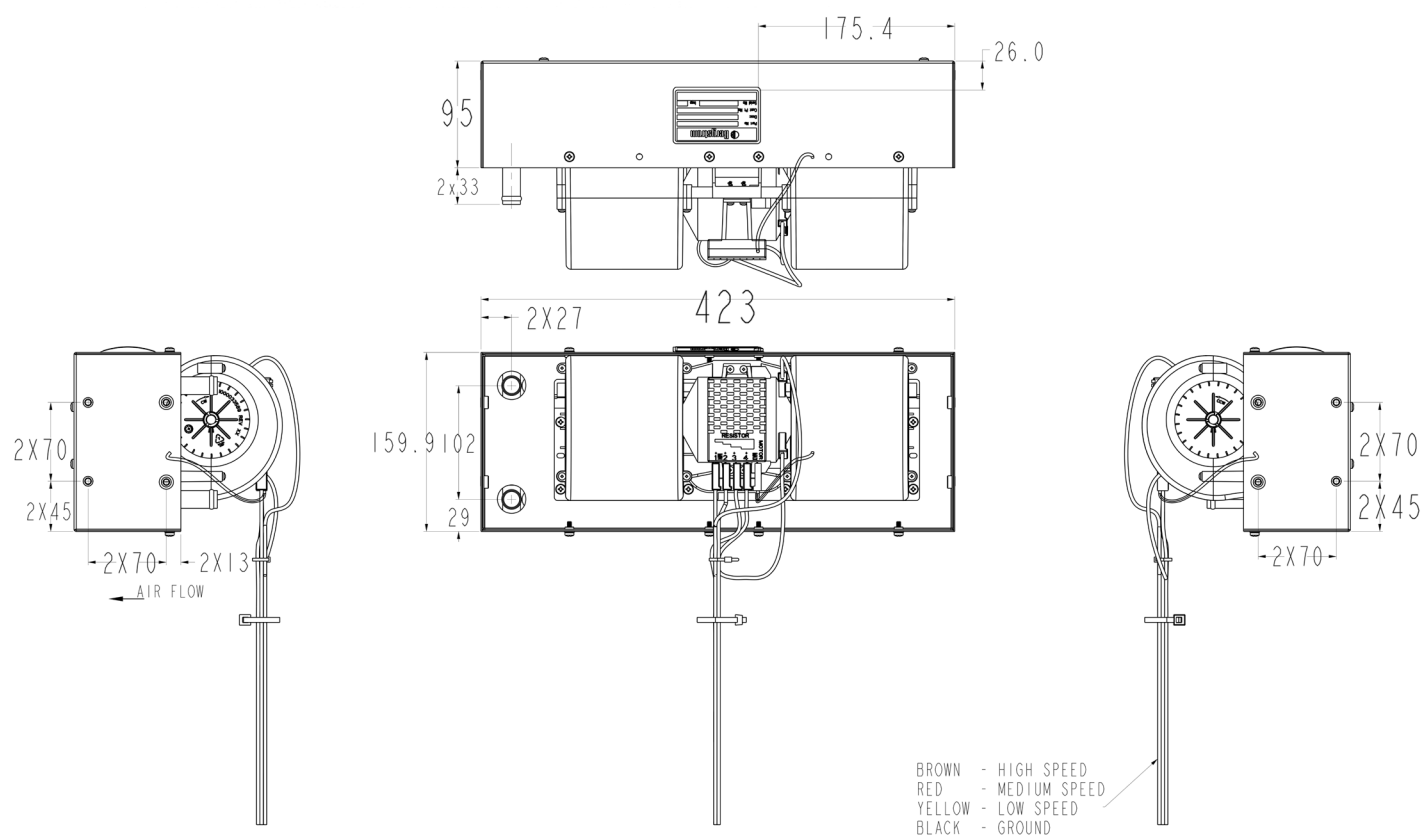


### Technical Specifications

Model	KH-295 12V
Voltage	12V
Capacity	43,085 BTU/hr (12,6 kW)
Amps	27.94 A
Maximum air flow	500 SCFM (844 m³/hr)
Dimensions (W x H x D)	16.6in x 6.3in x 7.5in (423mm x 160mm x 190mm)
Weight	14 lb (6,4 kg)
Mounting Position	Floor
Tube Connection	(2) 5/8" O.D.

Unless otherwise stated, performance measurements are conducted in accordance with SAE J638 for heaters and IMACA 200 for evaporators.

## Line Drawing



## KH-295 Order Guide

Part	Catalog / Part Number	Notes
Unit Part Number	KH295-12 / 1002560911	12V



When placing an order please contact your sales representative to review your order to ensure the proper system has been identified for your vehicle application.

Availability of the products shown in this catalog is subject to change without notice by Bergstrom, Inc. For the most current product information please visit the Kysor distributor website at <https://parts.shop.bergstrominc.com/>.

### Warranty

- 1-year limited warranty